

**MINUTES OF THE PARISH COUNCIL LIAISON MEETING  
HELD AT 5.30PM, ON  
TUESDAY, 23 FEBRUARY 2021  
VIRTUAL MEETING VIA ZOOM**

**Present:**

Parish Cllr Keith Lievesley	Acting Chair for this meeting only Ufford Parish Council
Councillor Irene Walsh	Cabinet Member for Communities (not chairing)
Parish Cllr Margaret Long	Thorney Parish Council
Parish Cllr Alyson Willans	Thorney Parish Council
Parish Cllr Anne Perkins	Ailsworth Parish Council
Parish Cllr Catherine Lee	Bretton Parish Council
Parish Cllr Chris Burbage	Bretton Parish Council
Parish Cllr Henry Clark	Peakirk Parish Council
Parish Cllr Jason Merrill	Bretton Parish Council
Parish Cllr June Bull	Orton Longueville Parish Council
Parish Cllr Phillip Thompson	Deeping Gate Parish Council
Parish Cllr Richard Clarke	Wansford Parish Council
Parish Cllr Vince Moon	Werrington Neighbourhood Council
Parish Cllr Susie Lucas	Bainton and Ashton Parish Council
Parish Cllr Neil Boyce	Castor Parish Council
Richard Astle	Chair, Langdyke Countryside Trust (LCT)
Matt Oliver	Head of Think Communities
David Beauchamp	Democratic Services Officer
Philippa Turvey	Democratic and Constitutional Services Manager

The Democratic Services Officer opened the meeting, noting that Cllr Walsh had sent her apologies and that Parish Cllr Lievesley had offered to take the Chair for this meeting. There were no objections to this proposal and Parish Cllr Lievesley therefore took the Chair.

**6. APOLOGIES FOR ABSENCE**

Apologies for late arrival were received from Councillor Walsh, Parish Cllr June Bull, Parish Cllr Susie Lucas and Parish Councillor Neil Boyce.

Apologies for Absence were received from Diane Templeton (Clerk, Deeping Gate Parish Council).

It was noted that Parish Councillor Phillip Thompson would need to leave the meeting at 7.15pm.

**7. MINUTES OF MEETINGS HELD ON**

**26 February 2020 – Parish Council Liaison**

The Minutes of the Parish Council Liaison Meeting held on 26 February 2020 were agreed as a true and accurate record.

## **26 November 2020 – Extraordinary Parish Council Liaison**

The Minutes of the Extraordinary Parish Council Liaison Meeting held on 26 November 2020 were agreed as a true and accurate record.

### **8. RESPONSE TO COVID-19 (HUB UPDATES)**

The Head of Think Communities (HoTC) gave an update on the response to the COVID-19 pandemic. Presentation slides may be found in Appendix 1.

The Parish Council Liaison meeting debated the report and in summary, key points raised and responses to questions included:

- Over 95% of the over-70s had been vaccinated and the vaccination programme was now moving on to the over-65s. Members praised the programme's progress.
- Members expressed concern over the impact of the media's portrayal of the efficacy of the AstraZeneca vs. the Pfizer vaccine. The Head of Think Communities responded that there was currently insufficient evidence to compare the effectiveness of the two vaccines. Officers were keen to ensure all available information was on a single website and it was hoped that the NHS would provide the appropriate content. Leaflet and poster campaigns were being considered.
- Members commented that the AstraZeneca vaccine was highly effective
- People with long-term health conditions had already been offered a vaccine alongside the elderly.
- The HoTC did not have information on the progress of the delivery of second vaccine doses. It was known however that Cambridgeshire's vaccination programme was performing well compared with the rest of the country.
- It was noted that people who had received a first dose through the national NHS system would have been assigned a date for their second jab. This was not the case for those booking via GPs.

### **ACTIONS AGREED**

1. The Head of Think Communities to share web information on vaccination and Community Grants in Peterborough with Parish Councillors.

*Councillor Walsh joined the meeting at this point but did not take the Chair.*

### **9. JOHN CLARE COUNTRYSIDE PROJECT**

The Chair of the Langdyke Countryside Trust (LCT) delivered a presentation on the John Clare Countryside Project. Presentation slides may be found in Appendix 2.

- Orton Longueville Parish Council was considering producing a Biodiversity Action Plan. It was agreed that Chair of the LCT would send Parish Councillor June Bull examples of Biodiversity Action Plans produced elsewhere.
- The LCT did not have the capacity to take forward schemes; they needed to be led by parishes.
- The Cabinet Member had mentioned the John Clare Countryside Project at Cabinet. People would be impressed by the community-led approach. This tied in well with the Think Communities approach mentioned in the next agenda item.

- Parish Councillor Neil Boyce commented that he would be happy to assist Bretton Parish Council with formulating environmental projects. The countryside to the west of Peterborough had a significant role to play and people from both urban and rural areas should be encouraged to enjoy it.
- It was noted that John Clare country had cultural and heritage significance, e.g., stately homes and medieval churches. Heritage trails from urban areas could be considered.

## 10. PETERBOROUGH TOGETHER

The Head of Think Communities (HoTC) delivered a Presentation on Peterborough Together and the next steps for the Think Communities Programme.

The Parish Council Liaison meeting debated the report and in summary, key points raised and responses to questions included:

- The Cabinet Member commented that she had just attended a meeting of city leaders to discuss the COVID-19 pandemic. The Think Communities approach had built up stronger partnerships to tackle the pandemic. It was important to develop the relationship between partners and residents.
- Members commented that the relationship between parishes and the Council needed to improve. Feedback was provided on some issues by the Council but not others.
- Members suggested that while the presentation delivered by the HoTC was positive, there needed to be clarity on what parishes could do in practice. The John Clare Countryside Project and Good Neighbours Scheme were positive as they provided a focus for the community and enabled parishes to work together. The relationship needed to be two-way; with the City Council contributing ideas as well as parishes.
- Members suggested that parish councils should consider producing a five-year plan, as Barnack had done.
- Members commented that Asset Based Community Development (ABCD) was effective at including people and developing an action plan was a good idea. Officers needed to be aware the community groups were already active and new initiatives needed to complement them, not alienate them.
- The HoTC thanked members for their comments and agreed that the Council could take an active role in developing suggestions for local schemes. The ultimate aspiration was to understand individual areas so that the appropriate Council officers could be identified and a passion generated in the Council for these areas of the City. The Council was requesting the help of parishes to generate a place-based approach within the organisation.
- Some Members commented that they had not received feedback on their completed parish profiles for Community Connectors and highlighted the importance of two way communication between parishes and the City Council. There were many good ideas at the grass roots level and discussions took place at meetings such as the CAPALC Parish Forum but there was no one to consolidate these ideas.
- It was agreed that the HoTC would chase up feedback to parishes on their completed parish profiles. It was noted that Community Connectors had competing priorities between ABCD and the COVID-19 response.
- Members asked who the Community Connectors were and if one had been appointed to Bretton. Officers responded that there were only two connectors, and neither had been appointed to Bretton. The challenge was to train ABCD champions and work was underway to do this.

## **ACTIONS AGREED**

- 11.
- It was agreed that the HoTC would chase up feedback to parishes on their completed parish profiles.

## **ANY OTHER BUSINESS**

The Cabinet Member commented that this was the last Parish Council Liaison meeting of this municipal year and thanked attendees for their contributions. It was yet known how the meeting would be taken forward in the new municipal year.

It was noted the information on Peterborough City Council's website relating to Thorney Parish Council was out of date. It was agreed that the Democratic Services Officer would update this information.

## **ACTIONS AGREED:**

It was agreed that the Democratic Services Officer would update information on Peterborough City Council's website relating to Thorney Parish Council.

CHAIR

5.30pm – 6.55pm

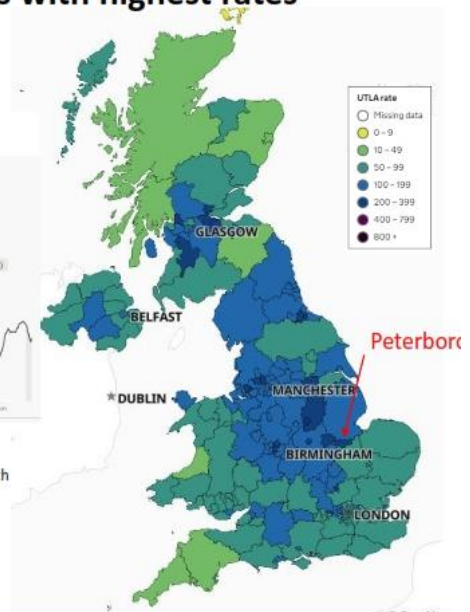
# Covid Response Update

Peterborough Parish Council Liaison  
23rd February 2021

**Matt Oliver**  
Head of Think Communities

**Positive cases, hospital admissions and deaths are all decreasing at a national level. Peterborough remains one of the areas with highest rates**

## UK Summary



Peterborough's all age incidence rate of 254 per 100,000 (for week ending 17<sup>th</sup> April) is over twice the England rate of 125 per 100,000

**Peterborough's incidence rate remains high and has stopped dropping rapidly. Peterborough is 7<sup>th</sup> highest LTLA for 7 day all incidence rate.**

Incidence and Positivity data									
Area	Provisional surveillance adjusted weekly incidence (cases/100,000) & trend vs previous 7 days		Weekly Incidence (cases/100,000) & trend vs previous 7 days		7-day change in case rate (%)	Weekly incidence - 60+ years (cases per 100,000) & trend vs previous 7 days		Positivity Rate (%) & trend vs previous 7 days	
Data to date	18-Feb		16-Feb		16-Feb	16-Feb		16-Feb	
Cambridge	67	↓	69.7	↓	-31.5%	27.9	↓	2.5%	↓
East Cambridgeshire	76	↓	70.1	↓	-42.7%	34.0	↓	2.9%	↓
Fenland	195	↓	198.3	↓	-30.8%	154.3	↓	6.4%	↓
Huntingdonshire	124	↓	120.8	↓	-30.4%	103.1	↓	4.8%	↓
South Cambridgeshire	55	↓	66.6	↓	-44.5%	47.3	↓	2.9%	↓
Peterborough	269	↓	282.3	↑	0.2%	120.8	↓	9.5%	↓
<b>EAST OF ENGLAND</b>	-	-	110.6	↓	-26.3%	82.2	↓	4.7%	↓
<b>ENGLAND</b>	-	-	128.5	↓	-23.6%	94.3	↓	5.4%	↓

*NOTE: Provisional adjusted weekly incidence rates are subject to change with the inclusion of additional cases on subsequent days. Figures are rounded to nearest whole number to account for possible minor discrepancies with national data.*

OFFICIAL-SENSITIVE

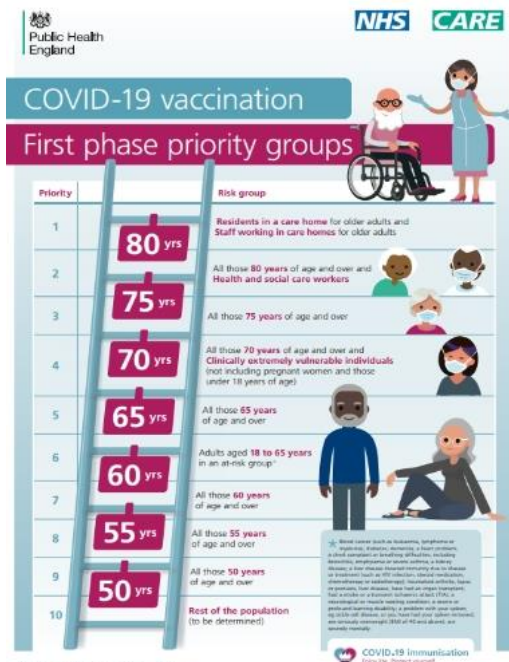
**Differences in trends across the districts, with Peterborough and Fenland having higher rates and slower decline**



OFFICIAL-SENSITIVE

# Continued Rapid Response Through Lockdown

- Continued Rapid Response Meetings Weekly
  - Marshals, Youth Workers, School, PES, Public Health, Environmental Health, Community Groups, Police
  - More robust intelligence, data and information
  - Action based on intel and evidence – with resources available.
- A communications programme has been developed for the BAME community including a script for community leaders.
- The 'Stand Firm' campaign has launched with a range of powerful films from people who have experienced Covid and youth videos.
- The Police are targeting areas of non-compliance and issuing tickets when there is continued non-compliance.
- The Team are focussing on responding to the increase in rates in working age adults
- The Public Health team have identified the top 10 local businesses who may benefit from lateral flow tests, although there has been reluctance from some of the businesses to take up the offer



PHE 11895 COVID vaccine priority poster.pdf

## Vaccination in Peterborough

Over 90% over 70s have been vaccinated

Some Concerns about Fake News and Myths

[COVID-19 national vaccination programme | Cambridgeshire and Peterborough Clinical Commissioning Group \(cambridgeshireandpeterboroughhccg.nhs.uk\)](#)

The Fleet Community Centre, Peterborough  
 Thistle Moor Medical Centre, Peterborough  
 Werrington Surgery, Peterborough  
 Stanground Surgery, Peterborough  
 Halls Chemist (Napier Place), Orton Wistow  
 City Care Centre in Peterborough  
 Peterborough City Hospital  
 Jenner Practice, Whittlesey & Thomas Walker Surgery, Peterborough  
 East of England Arena and Events Centre in Peterborough

## Additions to the CEV (Shielding List)

District	Previous number of CEV	Newly added	Total
Cambridge	4297	1716	<b>6013</b>
East Cambridgeshire	3567	748	<b>4315</b>
Fenland	4859	1228	<b>6087</b>
Huntingdonshire	7558	1714	<b>9272</b>
Peterborough	6089	4000	<b>10089</b>
South Cambridgeshire	6691	1301	<b>7992</b>
<b>Total</b>	<b>33061</b>	<b>10707</b>	<b>43768</b>

## Think Communities: Peterborough Local Hub

- 703 calls were received for support in the last 3 months
- Call rates more than doubled each month for the last 3 months
- Increase in calls due to a residents needing food parcels / vouchers over the Christmas period and struggling financially.
- A lesser but no less significant number of calls for mental health, covid test booking and prescription support.
- The Hub team are continuing to support those who are self-isolating / CEV clients eg providing them with priority DEFRA supermarket slots and sourcing volunteers to do shopping for them.
- The team have also been supporting the county hub in arranging for local transport for those struggling to attend their vaccine appointments.
- Increased focus on supporting vaccine hesitancy through work with communities



## Winter Support Grant

- In total 3609 applications as of 11am today across Cambridgeshire & Peterborough
- 1497 applications were Peterborough residents
- All applicants that applied before the pause on the 22nd December were contacted - we focused on meeting immediate/urgent need
- 250 families were supported with accessing food through local food banks in the 2 weeks leading up to Christmas across Cambridgeshire and Peterborough
- 12,184 eligible children/young people received food vouchers for the Christmas break
- Over 500 emergency fuel vouchers have been provided and over 190 families signposted to their local libraries to get basic hygiene supplies across Cambridgeshire and Peterborough
- Main support is around fuel, hygiene & children's supplies

## Think Communities: Safer Peterborough Partnership

- Funding for 4 Community Covid Support Workers in key areas Mental Health, Disability, Older People and Family Support.
- Covid Secure Unit for IAG on learning and employment opportunities
- CPFT are supporting Peterborough by developing the HAY mental health support website. [www.HAYPeterborough.co.uk](http://www.HAYPeterborough.co.uk)
- The Peterborough Food Bank received a high level of donations over the Christmas period, although staffing has been an issue with some having to self-isolate/or shield
- Cross Keys Homes have made available two houses to support those fleeing from domestic abuse

## Community connector news

- Community and Parish Covid-19 grants
  - 56 applications to date – 13 from parished areas (mostly rural)
  - Deadline extended to March 5<sup>th</sup>

<https://forms.office.com/Pages/ResponsePage.aspx?id=ZLMn4x4EUUyC8skGp4-cyXJ9mz6YRzhltnxjFI2IZO9UN0NYWFVRVURKUVZaQVI0Qlk1S1pPVUZMUy4u>

- Football and physical activity consultation (Hampton)
- ABCD and the Armed Forces

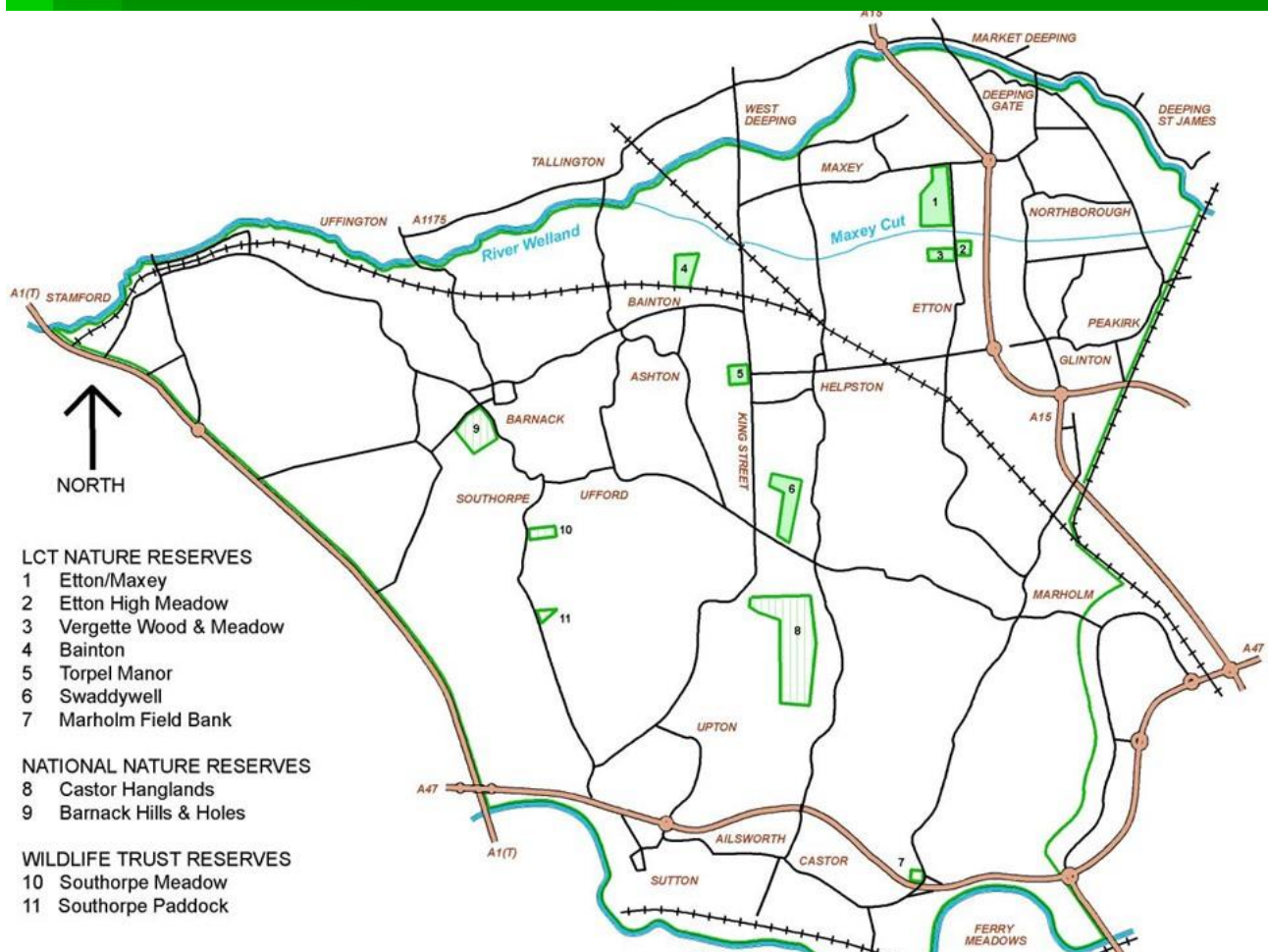
## Think Communities to Peterborough Together

- As we progress in to recovery we will mainstream the Hub and the expanded Safer Peterborough Partnership way of working.
- Applying this to future challenges of economic hardship, mental/physical health and educational / digital inequalities
- To foster a preventative approach we want to foster a sense of active citizenship which we will call “Peterborough Together”
- As a system of local councils, health, public, voluntary and community sectors we need to support the activities that not only help people in the short term but that enable them to find longer term solutions.
- Parish councils have a central role to play

**Thank you all  
for your support  
during this difficult time.**

# *John Clare Countryside*

*a heritage landscape  
with nature at its  
heart*



# Our objectives

- To deliver significant **increases in key wildlife habitats**
- To promote **public health and wellbeing**, providing large areas of accessible green open space for the people of Peterborough
- To help local communities to **understand, appreciate and enjoy their local natural and built heritage**
- To pilot and **champion best practice sustainable development** across the built and farmed environment
- To create **new jobs and economic opportunities**

# Our partners

- Parishes in the JCC area
- Natural England
- Natural Cambs
- PECT
- Wildlife Trust
- WSAT (Sacrewell)
- Nene Park Trust
- Langdyke CT
- Milton Estates
- Burghley Estate
- Protect Rural Peterborough
- Welland River Partnership
- Peterborough City Council
- Tarmac
- John Clare Trust
- John Clare Society

# Parish Nature Recovery

- 16 parishes signed up to create 10 year plans
- Focus of 2021 - Thank You Nature includes
- 41 projects identified - £26,000 of initial funding allocated, including
  - Hedge and tree planting
  - New access trails
  - Road verge maintenance
  - Pond and wildflower meadow creation
  - Churchyard and school-grounds nature plans
  - Signage and information

## Thank You Nature



- Series of planting events in autumn 2021
- Further round of funding
- More projects across wider landscape, working with private landowners

# Your invitation

- Get involved!
- Parish Council decides to develop a nature recovery plan
- Set up small, local team to take forward
- Advice from our central team of 'informed volunteers'
- Funding bids autumn 2021

This page is intentionally left blank