

ADULTS AND COMMUNITIES SCRUTINY COMMITTEE	AGENDA ITEM No. 5
2 MARCH 2020	PUBLIC REPORT

Report of:	Rob Hill, Assistant Director Community Safety		
Cabinet Member(s) responsible:	Cllr Irene Walsh, Cabinet Member for Communities		
Contact Officer(s):	Helen Gregg, Strategic Partnership & Programmes Manager	Tel.	01733 863618

SAFER PETERBOROUGH PARTNERSHIP BOARD REPORT

R E C O M M E N D A T I O N S	
FROM: Wendi Ogle-Welbourn, Executive Director, People and Communities, Peterborough and Cambridgeshire Councils	Deadline date:
<p>It is recommended that the Adults & Communities Scrutiny Committee:</p> <ol style="list-style-type: none"> 1. Scrutinise the content of the report, noting and commenting on the activity of the SPP Board. 	

1. ORIGIN OF REPORT

1.1 This report is presented at the request of the Adults & Communities Scrutiny Committee.

2. PURPOSE AND REASON FOR REPORT

2.1 This report is being presented to update Adults & Communities Scrutiny Committee members on the key activity of the Safer Peterborough Partnership (SPP) Board.

2.2 This report is for the Adult & Communities Scrutiny Committee to consider under its Terms of Reference Part 3, Section 4 - Overview Scrutiny Functions, paragraph No. 2.1: Functions determined by Council:

2. Safeguarding Adults

8. Targeted Youth support (including youth offending)

Functions determined by Statute: To review and scrutinise crime and disorder matters, including acting as the Council's crime and disorder committee in accordance with Sections 19 of the Police and Justice Act 2006;.

3. TIMESCALES

Is this a Major Policy Item/Statutory Plan?	NO	If yes, date for Cabinet meeting	
---------------------------------------------	-----------	----------------------------------	--

4. BACKGROUND AND KEY ISSUES

- 4.1 The 1998 Crime and Disorder Act established partnerships between local authorities, the police and police authorities, fire service, probation service, health authorities, the voluntary sector, local residents and businesses.
- 4.2 The aim of the Safer Peterborough Partnership (SPP) is to deliver safer communities as set out in the Act and relevant legislation. In doing this the partnership will develop and deliver plans to tackle crime and disorder and help create safer communities.
- 4.3 The SPP's objective is to improve integrated working, to deliver safer communities across partnerships such as the Health and Wellbeing Board, Safeguarding Boards, the NHS Sustainable Transformation Partnership, and other partnership boards such as domestic abuse/sexual violence, substance misuse and county housing board.
- 4.4 **SPP Board Key Areas of Responsibility**
- Undertake an annual strategic assessment to identify community safety priorities across Peterborough, and set priorities.
 - Develop a three-year Partnership Plan, refreshed annually, to co-ordinate activity to address community safety priorities across Peterborough.
 - Monitor delivery against objectives and performance through targeting resources to deliver efficient and effective outcomes for local residents, as well as ensuring statutory duties are delivered effectively.
 - Address risk, threat and harm to victims and local communities and facilitate the strengthening of local communities in the delivery of local initiatives.
 - Be a partnership body accountable for the delivery of safer communities including duties placed upon it by the Crime and Disorder Act 1998 and subsequent legislation in a transparent and open way.
 - Develop strong links to local communities and other partnerships / groups with similar objectives to assist in the delivery of local delivery priorities.
 - Develop appropriate mechanisms for the engagement of communities in tackling crime and fear of crime.
 - Hold partners accountable under section 17 of the Crime and Disorder Act 1998 for access to and use of resources and skills needed to mainstream community safety issues.
 - To be sighted on emerging threats and issues in Peterborough and manage/respond accordingly.
 - To meet the requirements of the Domestic Violence, Crime and Victims Act (2004) as amended and statutory guidance in relation to domestic homicide reviews (DHRs).
 - Ensure appropriate links with key boards/groups.
- 4.5 The Board meets on a quarterly basis and is chaired by the Chief Executive of Cross Keys Homes. The Board is currently meeting virtually due to the Covid-19 pandemic restrictions.

Membership

- Peterborough City Council
- Office of the Police and Crime Commissioner
- Cambridgeshire Constabulary
- Cambridgeshire Fire and Rescue Service
- Cambridgeshire and Peterborough Clinical Commissioning Group
- National Probation Service
- Bedfordshire, Northamptonshire, Cambridgeshire and Hertfordshire Community Rehabilitation Company (BENCH)

- Head of Adults and Children's Safeguarding Partnership Board

The Partnership is also supported by key local agencies from both the public and voluntary sectors. Registered Social Landlords have a key role to play in addressing crime and disorder and they are represented by Cross Keys Homes.

4.6 The Board's Partnership Plan for 2017-2020 is published on PCC's website: <https://www.peterborough.gov.uk/asset-library/imported-assets/CopyOfSaferPboroPartnershipPlan2017-2020Final.pdf>

It should be noted the plan was actually published in 2018 and it was agreed to run through to 2021.

There are 4 high level areas of priority in the plan:

- Building Resilient Communities
- Offender Management
- Domestic Abuse and Sexual Violence
- Tackling Anti-Social Behaviour and Environmental Crime

It was subsequently agreed by members and scrutiny committee that these priorities were too high level and needed to drill down and focus on more local activity. This resulted in the number of priorities being reduced to three, more focussed priorities:

- Drug Intervention
- High Harm Offenders
- Street Sex Working and Street Exploitation

The Board also agreed to postpone the refresh of the partnership plan, due to the continued demand on services and resources needed to respond to the Covid-19 pandemic.

In addition, the Board agreed to bring in the work of the Peterborough Covid-19 Hub, linked to the work of the countywide coordination hub, the countywide community resilience group and the development of the Think Communities partnership, to continue the good work that has happened in response to the pandemic, including improved relationships, and create a partnership to focus on key pieces of work.

4.7 The Board's terms of reference were refreshed in August 2020 and presented at the September Board meeting. A revised version was presented and signed off at the November Board meeting.

4.8 Domestic Homicide Reviews

The SPP have a statutory obligation to meet the requirements of the Domestic Violence, Crime and Victims Act (2004) as amended and statutory guidance in relation to domestic homicide reviews (DHRs).

The following DHRs have been undertaken over the last year

DHR Date	Reference	Status
2020	Justine	An action plan has been developed and is being reviewed by the Home Office
2020	Robert	An action plan has been submitted to the Home Office for review
2021	Withheld – Ongoing investigation	Commissioned Feb 2021

Domestic Homicide Reviews are critically important to identify any safeguarding learning for partners in order to improve safety and support for victims of domestic violence. Through the

leadership of the Safer Peterborough Partnership, the above DHRs have proposed a number of actions aimed at strengthening support across Cambridgeshire for vulnerable persons. A full list of these recommendations will be published pending Home Office approval.

Notably, the Partnership has identified a need in Peterborough to improve support for migrant Eastern European communities. As a direct result a specialist independent domestic abuse advisor with language skills has been recruited to improve linkage and support with victims within the 'A8' communities (Czech Republic, Estonia, Hungary, Latvia, Lithuania, Poland, Slovakia, Slovenia).

4.9 SPP Board Priorities – Key Activity

Drug Intervention

- The Operation Spotlight working group has developed a delivery plan based on the 4 P's model and the following objectives:
 - **PREPARE** - To work in partnership to understand the scale and impact of drug supply and drug related serious street-based violence in Peterborough and be responsive to it.
 - **PROTECT** – To work in partnership to identify those at risk of drug related crime or those vulnerable due to being involved in drug supply and drug related serious street-based violence.
 - **PREVENT** – To work in partnership to support and divert individuals away from involvement in drug supply and drug related serious street-based violence.
 - **PURSUE** – To robustly and tenaciously target those high-risk offenders involved in drug supply and drug related serious street-based violence.
- The working group is now well established with consistent membership and attendance. A review of membership identified the need for more local community and voluntary representation, as a result of which the working group now has Neighbourhood Watch and other voluntary sector representation.
- A cuckooing toolkit has been developed.
- There have been some notable enforcement successes against individuals heavily involved in drug supply and exploitation of vulnerable children and adults.
- A prominent nominal in the county line picture in Peterborough was also charged and remanded with money laundering offences following a joined-up investigation involving the Neighbourhood Policing Teams and Detectives.
- A rise was noted in violence against local drug users, linked to a single individual possibly enforcing perceived drug debts. This resulted in two reported kidnap type offences. Further investigation led to the individual being charged and remanded with kidnap, assault, drugs supply and vehicle related offences.

Street sex working and street exploitation

- A project was established consisting of three strands: Protecting Victims; Disrupting Offenders; and Supporting Communities. Each strand has monthly meetings which report into the monthly Tactical Board. There are separate weekly meetings tracking progress regarding the housing project (see below). The Tactical Board is responsible for the co-ordination and support of the work streams, for example by identifying funding opportunities, co-ordinating communications strategies, and procuring and undertaking academic research.
- As part of the Empowering Women Everywhere (EWE) Housing Project, a property was identified and has been adapted to ensure it is fit for purpose. There have been some slight delays in work owing to new safe working practices in light of Covid 19, and the unexpected location of some mains gas pipes, which will need to be moved by the National Grid. Recruitment is underway for a Project Co-ordinator and 5 support workers. A locality risk review has been completed by local neighbourhood policing teams, and this has been shared with the Prevention and Enforcement Manager at the council to assist

with the ongoing monitoring of the property. Adherence to Acceptable Behaviour Contracts will be mandatory for all residents.

- Monthly Victims Meetings continue to provide opportunities for good problem solving. The group has moved to a more tightly timed agenda, meaning that practitioners can dial in to discuss specific cases. We have seen good attendance and engagement with Housing as a key partner over the last few meetings, and BENCH have also begun to attend, which is a positive step forward. Where acute needs have been identified outside of these meetings, escalation processes have enabled good problem solving, working with Housing to identify an agreed way forward.
- £3000 has been awarded to create a training film for partners helping them to spot and safeguard potential victims of modern slavery. The training will cover jointly both forced labour and sexual exploitation.
- Working relationships between the Sexual Exploitation and Sex Working Project, and the Police Public Protection Unit continues to be strengthened. Proactive disclosures regarding managed sex offenders to women at risk are becoming more commonplace.
- The Out of Court Disposal (OOC) process for kerb crawling has progressed and identified a provider.
- The group are also exploring opportunities to work with the CCG where there are concerns that offenders are securing prescriptions to enable them to exchange them for sex.
- The work ongoing in Peterborough has been showcased this month both at the National Sex Worker Conference by the National Police Chiefs Council Lead ACC Vajzovic, and also at the SPOC Day Event for Police Leads across the country. As a result of these events, we have locally had enquiries and offers of support from Northamptonshire Police, Essex Police, Beyond the Streets, and MASH (a Manchester based charity).

High Harm Offenders

- The Board has established a Problem-Solving Group (PSG) to monitor high harm offenders. The overarching aim of the PSG is to be an operational delivery arm of the SPP Board, managed and co-ordinated by representatives from the Police and city council.
- The group will respond to location-based community safety issues, including high risk of ASB, co-ordinating multi-agency interventions, with a focus on highest impact/harm issues specifically.
- The objective is to have an evidence base to problem solving by targeting locations and groups causing the most harm to communities.
- Key areas of responsibility include developing a method to score issues to prioritise and utilise resources to tackle the most serious issues, develop intervention plans and monitor action. The group is accountable to the SPP Board and will develop links with local communities and will oversee the governance of the ASB case review meeting.
- Members include PCC, Police, Cross Keys Homes, other Registered Social Landlords, Cambridgeshire Fire and Rescue, the CCG, and the National Probation Service.
- The group will meet monthly initially and then bi-monthly once established.

4.10 Work of the SPP Board in response to Covid-19

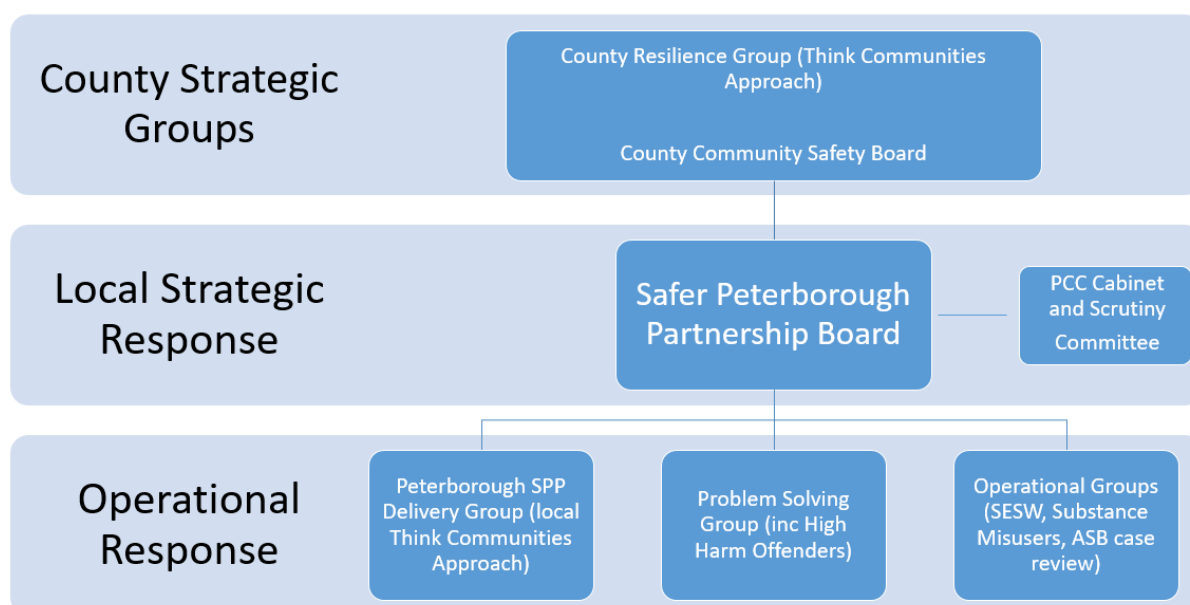
As part of the response to the COVID-19 pandemic, the Government instructed every Local Resilience Forum (LRF) area to establish local hubs. Hubs are required to provide targeted support for those people who require support in dealing with COVID-19.

The Peterborough Local Hub is supported by over 90 voluntary and community organisations, City Council services, Parish Councils, Cross Keys Homes linking with other social landlords, faith communities, Light Project Peterborough, the City Leadership Forum and City College. The Peterborough Hub forms part of the network of coordination hubs across Cambridgeshire and Peterborough.

The Safer Peterborough Partnership (SPP) leads the community response to COVID-19,

supported by the SPP Delivery Group, which determines the work of the Peterborough hub. The Group's key responsibilities are to:

- Respond to the impacts of the pandemic
- Share information with each other on current activity, challenges and opportunities
- Identify other challenges facing Peterborough residents and on what members of the group can do to address these, that others are not
- Understand and respond to local demand at an individual and community level
- Ensure consistent community messaging
- Ensure that information provided to and within communities, as well as the response from communities, is properly co-ordinated and is from a trusted or verified source
- Ensure that we are making the best use possible of all available resources
- Identify community-based risks and concerns, and either aim to resolve these locally or escalate to the county Community Resilience Group or other groups
- Work closely with the Peterborough Council for Voluntary Service and associated focus groups, council Place Co-ordinators, the countywide Community Resilience Group and others to identify areas of policy or strategy that we want to be able to influence



In practical terms, the Peterborough Hub offers advice and information, and facilitates access to or directly delivers support, such as:

- Food supplies, shopping and medication deliveries
- Financial / debt advice
- Low level support to domestic abuse victims
- Signposting to key support services to include mental health
- Family support
- Befriending including friendly calls
- Emotional wellbeing support
- Support with house maintenance and domestic tasks
- Economic hardship advice, information and practical support
- Transport to appointments (including vaccine appointments)
- Volunteer matching with local support organisations

The Hub launched on 2nd April 2020 and key highlights include:

- 1985 contacts (calls and emails) have been made to approximately 1400 individuals. 55% of those contacts were made in April and May 2020 during the first lockdown

- From these contacts over 3000 separate issues and enquiries have been supported, as calls are generally complex with more than one need. More than 850 enquiries have been requiring support to access food, either support with shopping or to access food due to low income
- Approximately 45% of all contacts were to residents aged 65 and over, therefore 55% were under the age of 65, showing that it was not just older residents that struggled during the initial lockdown and following months
- Around 10% of enquiries have been in relation to getting prescriptions due to self-isolation - we have worked in close partnership with SERV (<https://servsc.org.uk>)
- The Hub also responds to any local support needed for those identified as Clinically Extremely Vulnerable (CEV) as well as managing applications to the Self Isolation Support Fund, which has been set up to support those low-income residents who have to self-isolate due to having been in contact with people who have tested positive for COVID-19.
- Following a workshop facilitated by PCVS to discuss resources to respond to the continued pandemic, funding has been agreed (through the Winter Support Grant) to provide 4 Covid Support Workers with specialisms in Mental Health, Disability and Long Term Conditions, Older People and Family Support. There will also be language provision made available for non-English Speaking/Writing clients. All posts are to be subsumed within current roles within organisations (i.e increase additional capacity not new recruitment) but working across *all organisations* and communities in the City. Workers will also support those with no recourse to public funds (NRPF) where applicable
- The City College are collaborating with Peterborough College on an innovative project to provide a Covid-secure unit in the city centre to deliver information, advice and signposting on learning and employment opportunities (with follow-up digital, employability and life skills workshops) to people recently made redundant, longer-term unemployed, furloughed or in work and looking to upskill or retrain
- The Cambridgeshire and Peterborough Foundation Trust attend the meetings and have provided regular updates on the mental health exemplar project: www.HAYPeterborough.co.uk
- The group continues to see demand for people struggling to pay for food, utilities and fuel. A director at Huntingdonshire District Council is leading on this area on behalf of the countywide Community Resilience Group and is in dialogue with utility and fuel companies to try and address the issues. This is a key focus for the SPP Delivery Group
- Cross Keys Homes have made available two houses to support those fleeing from domestic abuse
- A virtual celebration event was held in September 2020 to thank organisations and volunteers for their support, and was attended by over 50 people
- Cross Keys Homes are leading on linking residents and registered social landlords to ensure these organisations are in contact with vulnerable residents to offer support
- There is also a bank of volunteers who support the hub and local organisations
- A comprehensive communications plan was established and includes regular newsletters, radio interviews, press releases/publication articles, and a leaflet was sent to all Peterborough households. In addition, presentations have been made to the Peterborough Parish Council Forum and the City Leadership Forum. The aim of these communication channels is to promote the Hub and Peterborough Information Network, so residents are aware of how and where they can get support, when they need it.

Further information can be found at the following link:

<https://fis.peterborough.gov.uk/kb5/peterborough/directory/site.page?id=G4w8ZBNzvWo>

5. CONSULTATION

5.1 Not applicable

6. ANTICIPATED OUTCOMES OR IMPACT

6.1 The Scrutiny Committee is expected to review the information contained within this report and respond / provide feedback accordingly.

7. REASON FOR THE RECOMMENDATION

7.1 Scrutiny Committee members to feel assured that appropriate progress is being made on the SPP priorities.

8. ALTERNATIVE OPTIONS CONSIDERED

8.1 The Scrutiny Committee must be kept informed of progress against the priorities identified and meeting outcomes.

9. IMPLICATIONS

Financial Implications

9.1 There are no significant implications within this category.

Legal Implications

9.2 There are no significant implications within this category.

Equalities Implications

9.3 There are no significant implications within this category.

Rural Implications

9.4 There are no significant implications within this category.

Carbon Impact Assessment

9.5

10. BACKGROUND DOCUMENTS

Used to prepare this report, in accordance with the Local Government (Access to Information) Act 1985

10.1 N/A

11. APPENDICES

11.1 Appendix 1 – Safer Peterborough Partnership Terms of Reference