

Chief Executive
Gillian Beasley

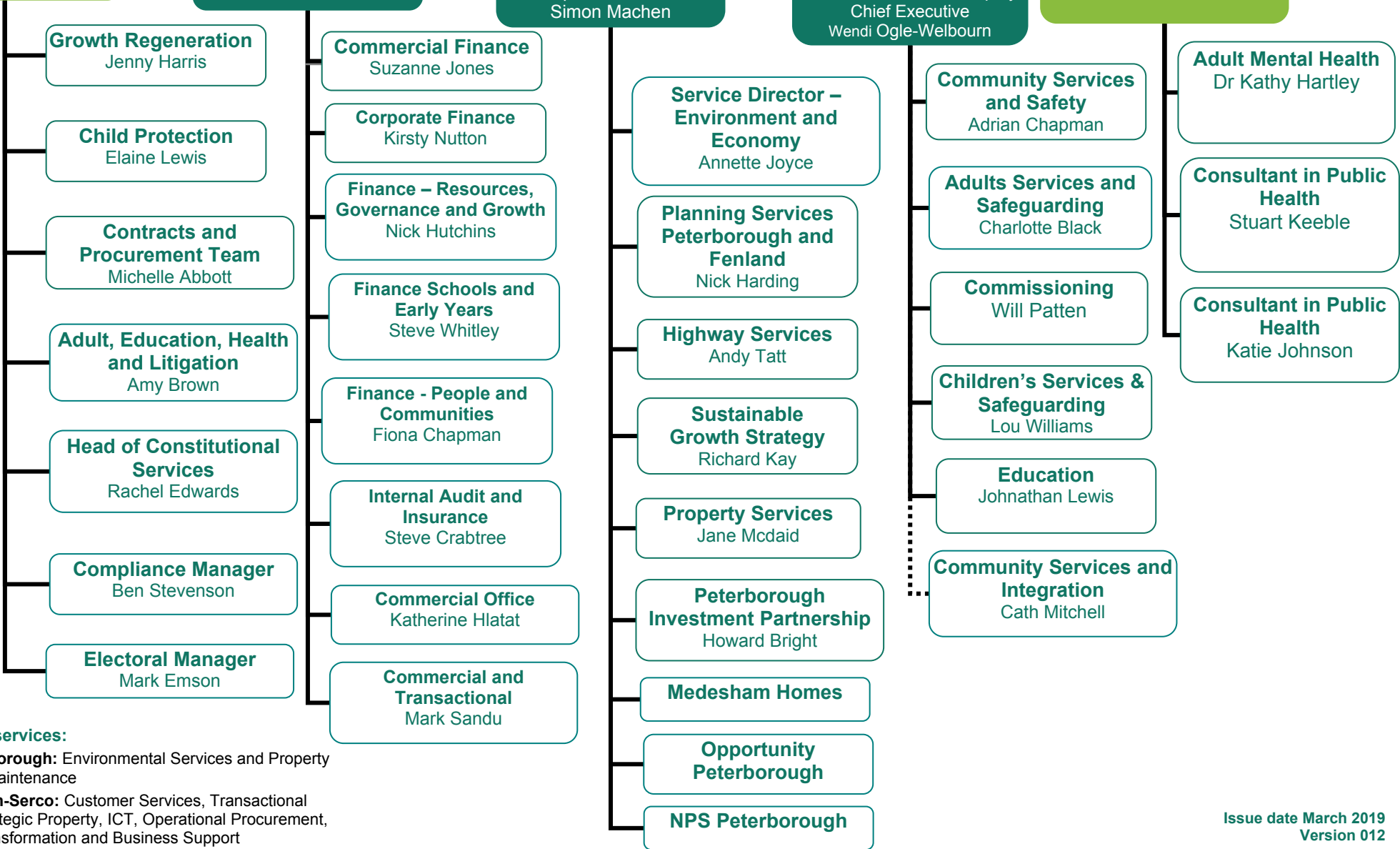
Law and Governance
Interim Director:
Fiona McMillan

Resources
Acting Corporate Director:
Peter Carpenter

Growth & Regeneration
Corporate Director:
Simon Machen

People & Communities
Executive Director:& Deputy
Chief Executive
Wendi Ogle-Welbourn

Public Health
Director:
Dr Liz Robin



485

Contracted services:

Amey Peterborough: Environmental Services and Property Design and Maintenance

Peterborough-Serco: Customer Services, Transactional Services, Strategic Property, ICT, Operational Procurement, Business Transformation and Business Support

Skanska: Highways Maintenance services

This page is intentionally left blank