

**Chief Executive**  
Gillian Beasley

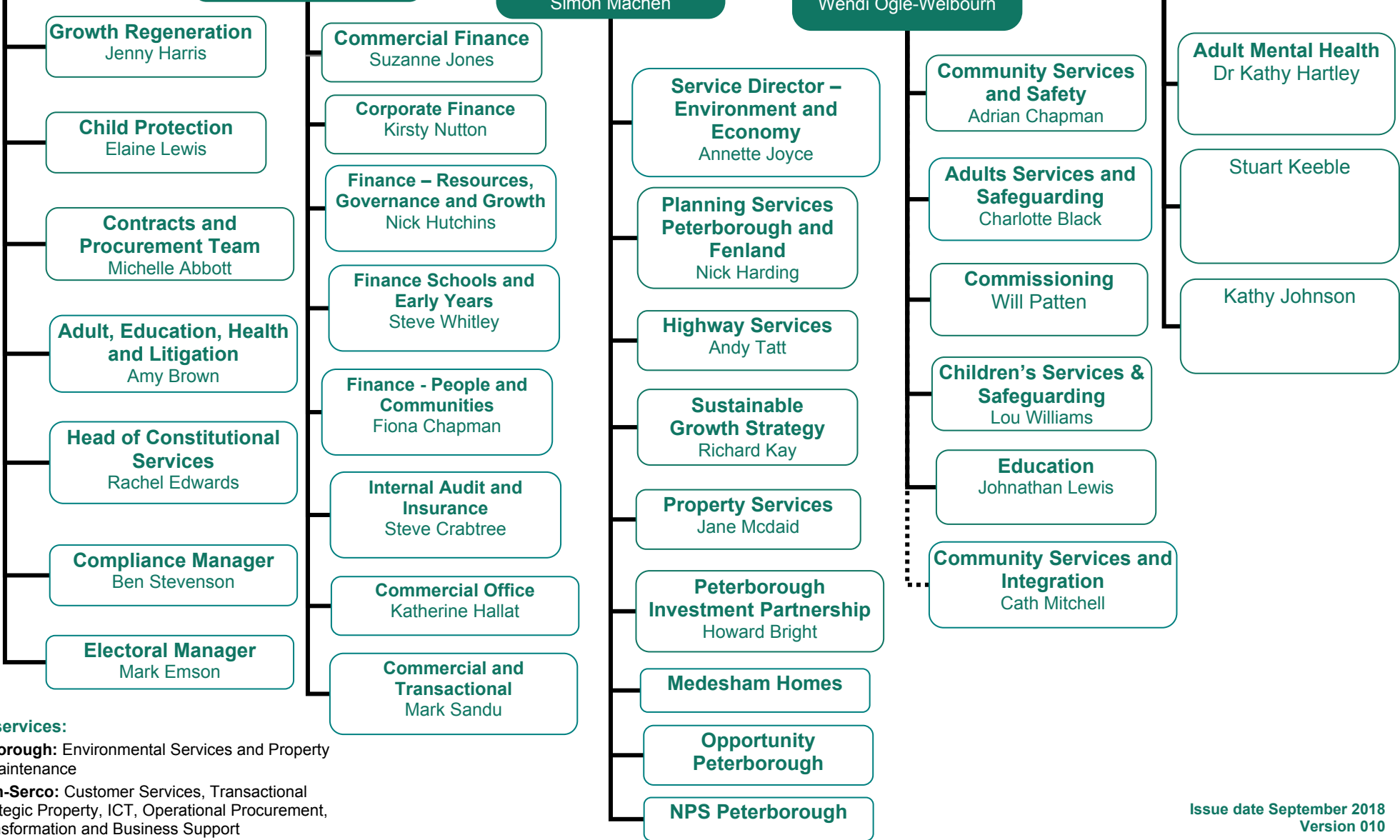
**Law and Governance**  
Interim Director:  
Fiona McMillan

**Resources**  
Acting Corporate Director:  
Peter Carpenter

**Growth & Regeneration**  
Corporate Director:  
Simon Machen

**People & Communities**  
Executive Director:  
Wendi Ogle-Welbourn

**Public Health**  
Director:  
Dr Liz Robin



487

**Contracted services:**

**Amey Peterborough:** Environmental Services and Property Design and Maintenance

**Peterborough-Serco:** Customer Services, Transactional Services, Strategic Property, ICT, Operational Procurement, Business Transformation and Business Support

**Skanska:** Highways Maintenance services

This page is intentionally left blank