


Scrutiny Commission for Health Issues

Introduction and Overview




Scrutiny Focus...

- To review and scrutinise the planning, decisions, and policy development relating to the following City Council services:
 - ✓Adult Social Care
 - ✓Safeguarding Adults
 - ✓Public Health


To carry out the statutory duty of the City Council to scrutinise local NHS commissioners and providers

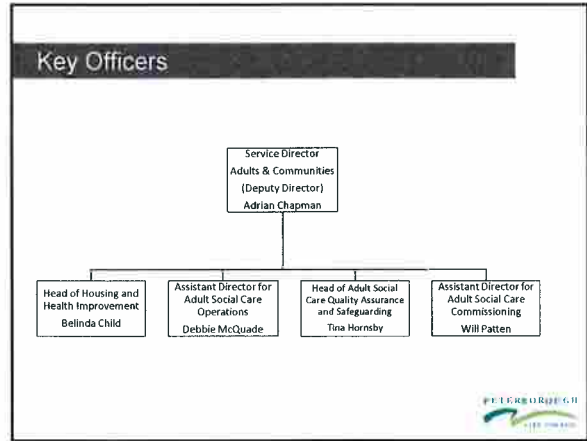
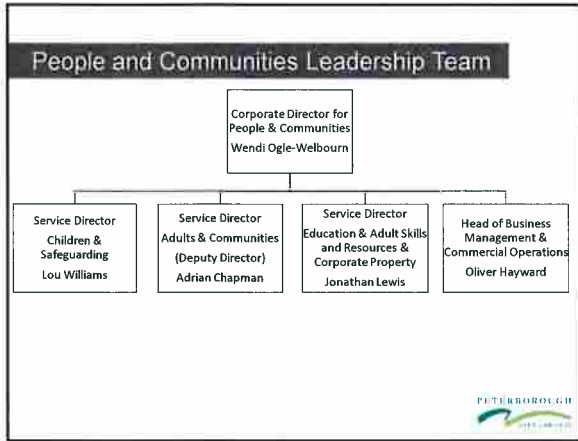
- ✓Scrutiny of the NHS



Adult Social Care and Safeguarding

Introduction and Overview






- ### Adult Social Care services
- Adult Social Care Delivery
 - Quality and Safeguarding
 - Commissioning

 - Care Act
 - Better Care Fund
- PETERBOROUGH
2023-2026




ASC Delivery

- Provide health and social care support for 18+ adults with physical, sensory, learning disability and/or autism, mental health disability and frail elderly
 - ✓ Information, advice and advocacy
 - ✓ Assessment and eligibility
 - ✓ Support planning, personal budgets and direct payments
 - ✓ Reviews
 - ✓ Carers Assessment
 - ✓ Learning disability and autism health services.
 - ✓ Delayed Transfer of Care
 - ✓ Occupational Therapy, reablement and rehabilitation services
 - ✓ Day Opportunities
 - ✓ 0-25 Service for Children with Disabilities
 - ✓ Financial assessments
 - ✓ Case management




ASC Delivery – Day Opportunities

- Providing day support for people with learning disabilities
- Providing preventative support for people with learning disabilities
- Providing paid employment and work experience for people with learning disabilities
- Securing sustainable full time employment for people with learning and physical disabilities, sensory impairments mental health conditions and autism
- Service transfers to City College Peterborough later in 2015
- Delivery model will operate from the Kingfisher Centre and up to four satellite locations, and will deliver £300k savings
- Delivery model includes an expansion in micro-enterprise opportunities



Case Study

- 49 Lincoln Road is a Day Service venue
- It has developed a unique way to grab the attention of potential employers
- Many people with a learning disability find it difficult to convey their work experience, skills and attributes either in person or on a CV
- In response to this staff are supporting individuals to develop digital CV's – enabling people to express their potential in short video clips
- This has recently been featured on BBC Radio Cambs




Adult Safeguarding

Within the Multi Agency Safeguarding Hub

- Receive adult safeguarding referrals, undertaking initial screening
- Triage people to other support services where the criteria for safeguarding is not met
- Support the adult at risk to identify outcomes they wish to achieve and what they would like to happen
- Lead the multi-agency work to risk assess and agree initial protection plans
- Arrange independent advocacy, where required
- Lead the multi-agency discussion and decision-making

Within ASC delivery

- Undertake safeguarding (section 42) enquiries and support adults at risk




ASC Quality and Safeguarding






ASC Quality and Safeguarding

- Manages processes linked to the Mental Capacity Act and Deprivation of Liberty Safeguards
- Delivers business improvement and best practice development across the ASC sector
- Manages quality assurance across ASC including user experience, complaints, and quality improvement
- Manages the ASC information strategy and public information
- Includes the Designated Adult Safeguarding Manager role – to coordinate action where there are safeguarding concerns around a care and support worker.



ASC Commissioning


ASC Commissioning

- Developing and implementing commissioning strategies to meet the social care needs of adults
- Managing the Adult Social Care commissioning budget
- Achieving value for money from commissioned services
- Developing the local market to best meet existing and emerging needs

- Responsible for commissioning the following services:
 - ✓ Older People's, Physical Disabilities, Sensory Impairment and Carers
 - ✓ Learning Disability
 - ✓ Mental Health



Care Act and Better Care Fund




Care Act 2014




Care Act

- The biggest change in social care law since the National Assistance Act
- Comprehensive work programme in place to implement changes
- Duties include:
 - ✓ Promotion of wellbeing
 - ✓ Preventing, reducing and delaying need
 - ✓ Provision of universal and tailored information and advice
 - ✓ Better support for the transition from children's to adult's services
 - ✓ Shaping the care market
 - ✓ Integrating, co-operating and working in partnership across the health and social care sector




Better Care Fund

- £3.8bn national fund announced by Government in 2013
- £11.9m in Peterborough to develop our vision for integration, specifically projects focussed on:
 - ✓ 7 day Working
 - ✓ Data sharing
 - ✓ A Person Centred system
 - ✓ Information, Communication and Advice
 - ✓ Ageing Healthily and Prevention




Suggestions for Scrutiny

- Implementation of the Care Act
- Implementation of the Better Care Fund programme
- Transformed Day Opportunities service



Public Health – Integrated across the Council


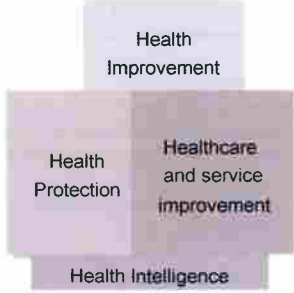


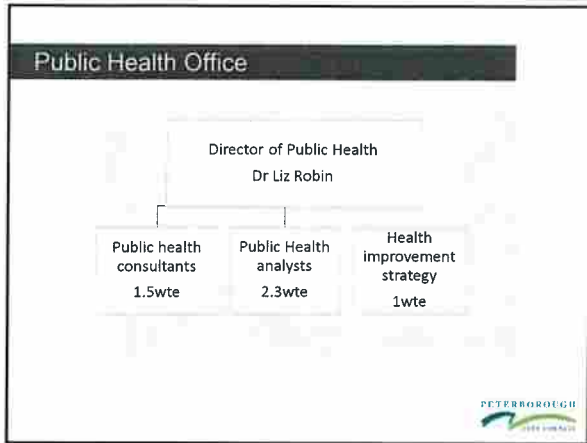
Public health functions of the Council

- The Health and Social Care Act (2012) transferred public health leadership and functions from the NHS to Local Authorities.
- Public health budgets and staff were transferred to the Council in April 2013 when the Act was implemented.
- The Director of Public Health (DPH) has statutory accountability for the public health functions of the Council
- Public health budgets and staff are integrated across Council directorates.
- Delivery is monitored against the national Public Health Outcomes Framework www.phoutcomes.info/



Three domains of Public Health

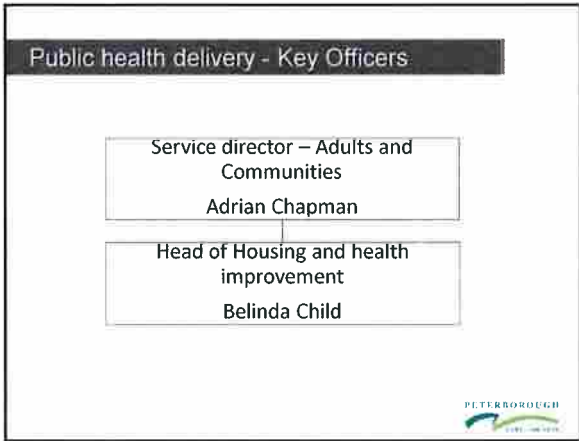




- ### Public Health Office
- ✓ Strategic leadership and accountability for the Council's public health functions
 - ✓ Annual Public Health Report
 - ✓ Joint strategic needs assessment for health and wellbeing
 - ✓ Public health advice to NHS commissioners
 - ✓ Health protection and public health emergency planning
 - ✓ Evidence and evaluation
 - ✓ Partnership working
- PETERBOROUGH
2009-2015

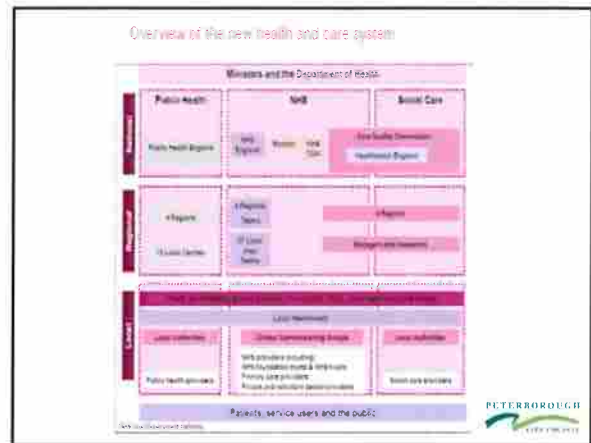
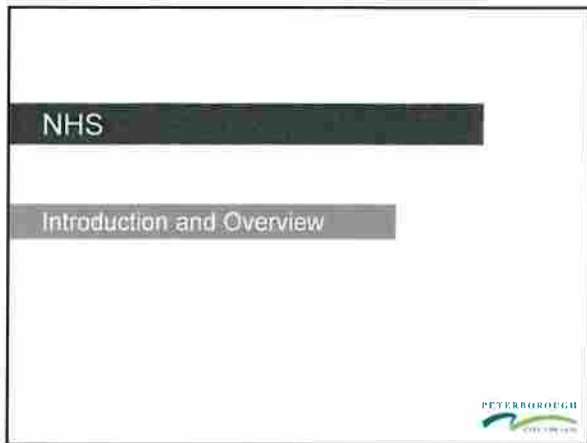


- ### Public Health Commissioning
- Commissions and monitors a range of public health contracts:
- ✓ Sexual health and contraception services
 - ✓ Substance misuse (drug and alcohol services)
 - ✓ School nursing
 - ✓ Health visiting (from October 2015)
 - ✓ Children's Centres
 - ✓ Some domestic abuse services
- PETERBOROUGH
2009-2015



- ### Public Health Delivery
- Delivery and/or co-ordination of health improvement programmes including:
 - ✓ Stop Smoking
 - ✓ Adult and Child weight Management
 - ✓ Healthy Schools
 - ✓ NHS Health Checks
 - ✓ Health Promotion Campaigns
 - ✓ Accredited Health Improvement Training
 - ✓ Volunteer Health Champion Programme
- PETERBOROUGH
CITY COUNCIL

- ### Suggestions for Scrutiny
- Cardiovascular disease programme
 - Health and Wellbeing Strategy development
 - Transfer of commissioning of Health Visiting
- PETERBOROUGH
CITY COUNCIL



NHS Scrutiny

The Committee may:

- Review and scrutinise any matter relating to the planning, provision and operation of the health services in Peterborough
- Report to the Secretary of State for Health on any proposals for substantial change to any part of the NHS's services within Peterborough

PETERBOROUGH
CITY COUNCIL

NHS Scrutiny

The Commission's NHS scrutiny powers cover:

NHS commissioners

- Cambridgeshire and Peterborough Clinical Commissioning Group, which is responsible for commissioning hospital and community health services locally
- NHS England, whose responsibilities include commissioning of specialised health care services and GP services

NHS providers e.g.

- Peterborough and Stamford Hospitals NHS Foundation Trust
- Cambridgeshire and Peterborough NHS Foundation Trust (CPFT), which provides mental health services and children's services

Non-NHS providers of NHS services

- These include private or not-for-profit organisations which are contracted to provide NHS services

PETERBOROUGH
CITY COUNCIL

NHS Scrutiny

- The NHS organisations must provide information and attend when the Commission requests them to do so (if enough notice is given). They must respond to any recommendations the Committee makes, stating the reasons if they do not accept any of them.
- The NHS organisations must consult the Commission on proposals for substantial variations or developments to health services within the area.
- Where a proposal for a health service change affects more than one local authority, scrutiny must be conducted through a Joint Health Overview and Scrutiny Committee (JHOSC) made up of members of the authorities concerned.
- The Commission is required to consider information and matters referred to it by Peterborough Healthwatch.



Suggestions for Scrutiny

- Cambridgeshire & Peterborough NHS System Transformation Programme
- Child and adolescent mental health waiting lists
- Out of hours and 111 services
- Primary care co-commissioning and implementation of prime ministers challenge fund.
- Any significant proposed NHS service changes or issues which arise during the year

