

Scrutiny Commission for Rural Communities

Introduction and Overview



Scrutiny Focus...

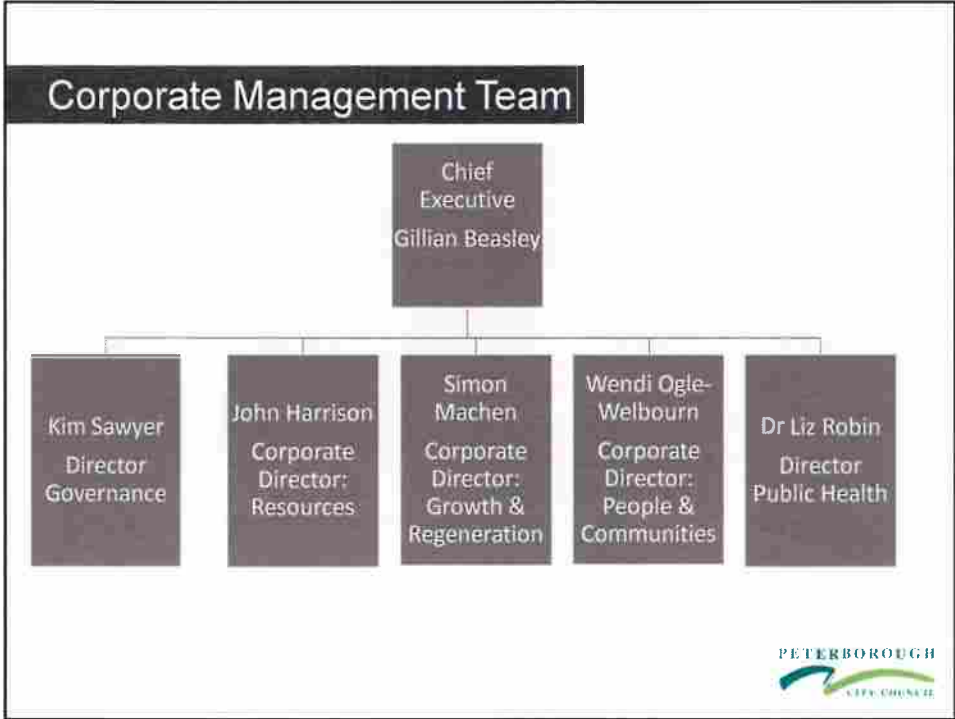
To discharge overview and scrutiny functions in relation to any area within the remit of all Scrutiny Committees which has potential for significant impact on the rural communities of Peterborough.

To scrutinise the agencies, mechanisms and processes involved in delivering services to rural communities.

To contribute to the development of policies, strategies and plans in relation to the delivery of services to rural areas.

To advise on and monitor crime and disorder issues in rural areas.





Rural Strategy

- **Rural Vision:** an overarching framework and set of principles for how the Council will support rural life and issues of concern
- **Parish Charter:** an agreement between the City Council and Parish Councils describing how they will work effectively in partnership
- Both documents are out for public consultation until 31st July



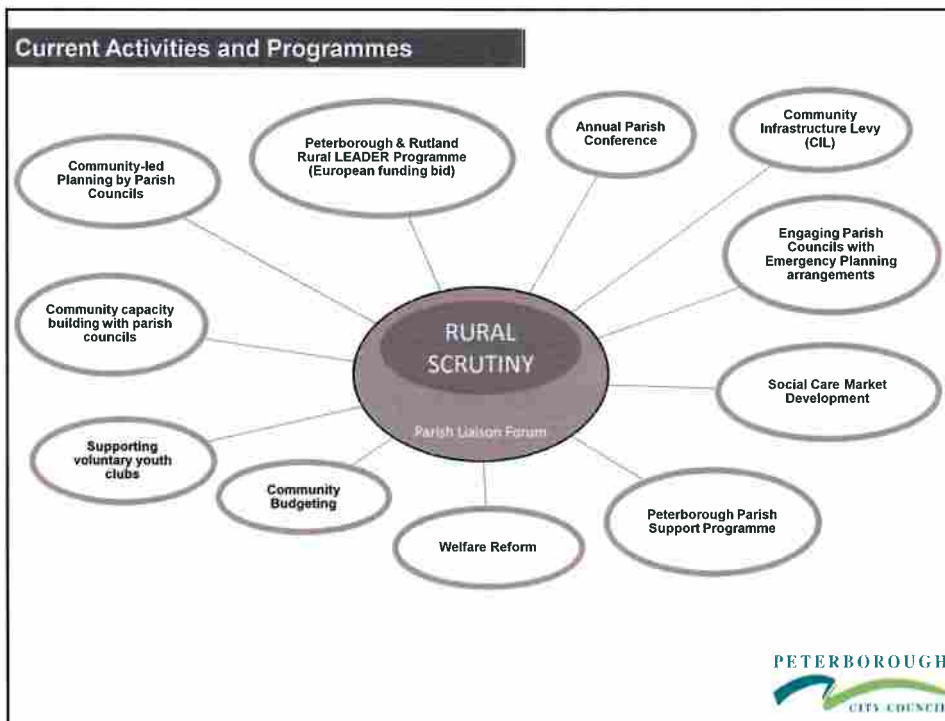
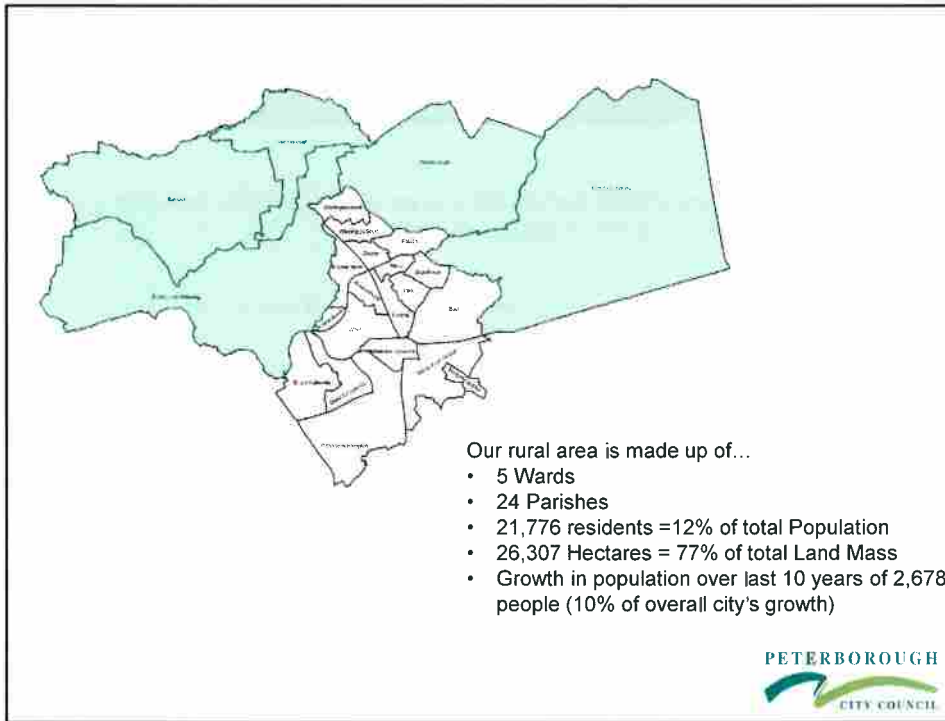
Rural Vision

The Rural Vision aims to provide a framework for achieving sustainable and viable rural communities in Peterborough and outlines how Peterborough City Council will work in partnership with Parish Councils to ensure that services are delivered more effectively and meet the needs of the local rural (and urban) communities.

Objectives

1. To recognise and promote current activities and programmes that support rural communities
2. To identify the priorities within rural communities to inform linked strategies and plans
3. To provide baseline data and information from which to measure success
4. To develop, implement, monitor and evaluate an annual action plan to ensure continuous alignment and ability to influence strategic priorities locally and across the city
5. To develop a Parish Charter for Peterborough to *'Improve joint working between the city council and Parish Councils so that services are delivered more efficiently and meet the needs of the local community'*





LEADER Project

- Opportunity Peterborough and Rutland County Council
- Up to £1.32m to develop the economies of rural Peterborough and Rutland
- Aims to improve the competitiveness of farming and forestry whilst supporting small businesses, creating growth and boosting productivity in the rural communities
- Allows farmers, growers, rural businesses and community groups to apply for grants towards projects that support the development of the economies and communities of rural Peterborough and Rutland
- Funding also available to boost rural tourism, provide cultural and heritage activities for the rural community and support farm diversification
- Part of the Rural Development Programme for England, jointly funded by the European Agricultural Fund for Rural Development (EAFRD) and the Department for Environment, Food and Rural Affairs (Defra)
- Delivered by economic development company, Opportunity Peterborough



Generic Successes

- Co-production of the Rural Vision
- Improved Infrastructure Planning
- Strong and effective co-ordination of Parish Liaison Forum
- Identifying and enabling opportunities for Parishes to work collaboratively on issues of common interest
- Annual Parish Conference
- Co-option of Parish Council representatives onto Scrutiny Commission



Generic Challenges

- Process and Procedures for the allocation of the newly introduced Community Infrastructure Levy
- Working with Rural communities in relation to devolved services
- Supporting Parish Councils with forward planning to assist budget forecasts and prioritising need



Suggestions for Scrutiny so far...

- Final Rural Vision and Parish Charter
- LEADER Programme
- Impact and effectiveness of the annual parish conference
- Process and Procedures for the allocation of the Community Infrastructure Levy
- Devolving services to Parish Councils



DISCUSSION: Other Suggestions for Scrutiny?

- Crime and safety
- Cohesion and impacts of population change
- Health issues and services
- Growth and regeneration
- Skills
- Services for children, young people and families
- Housing
- Cultural offer
- Rural business support and development
- Environmental issues

